

Logical Network Inventory* Software

Control Your Network – Control Your Future

Smallworld Network Inventory* software, from GE Energy, offers leading service providers intelligent inventory to control the deployment of their network. The combination of spatially accurate inventory, integrated design intelligence and strategic decision support is critical to business survival.

Smallworld Network Inventory supports an impressive list of world class communications customers, streamlining their network planning and engineering, service fulfillment and service assurance business processes. Smallworld Network Inventory is a highly scalable portfolio of products that provide an end-to-end view of multi-vendor, multi-technology networks.

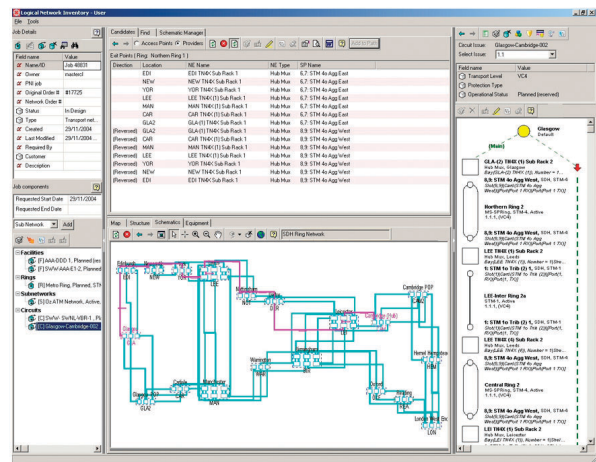
Part of the Smallworld Network Inventory suite of products, Logical Network Inventory* supports the planning and design of the circuits that deliver services to customers. Its integration with Physical Network Inventory* ensures that the as-built or planned physical network infrastructure supports the requirements that will be placed on it by these services. The result is a streamlined, integrated network planning process, from service requirements to network build, that lets you plan capacity, allocate bandwidth and assign circuits.

Intelligent Network Inventory

Logical Network Inventory is a network modeling tool that enables you to document, plan and manage telecommunications networks. It provides you with the tools to model the infrastructure of your network and to effectively manage the bandwidth within it.

Network modeling

Logical Network Inventory provides tools to configure, capture and manage the complex elements that govern the real life behavior and capabilities of your network. This includes the logical infrastructure of the network and also the rules that control the operation of the network – both from a technical and business perspective. In particular Logical Network Inventory provides:



- The ability to define the network structures, including locations, network elements and providers including facilities, rings and subnetworks.
- Recording of the logical services riding on the underlying structures.
- Configuration and capability rules to support network operations.
- Circuit routing rules for achieving service level requirements.
- A flexible channel hierarchy, supporting both synchronous and asynchronous technologies.
- Life cycle management for operational state transitions and validation.
- Ability to define and implement complex protection and diversity schemes.



Technology Support

Logical Network Inventory supports the design, documentation and management of all circuit-based telecommunications networks.

Specifically, Logical Network Inventory provides support for:

- Synchronous circuits such as PDH and SDH/SONET.
- Asynchronous circuits such as ATM or Frame Relay.
- DWDM and the optical layer.
- Gigabit Ethernet and VLANs.

Planning and Design

Logical Network Inventory provides you with the functionality to support the complete end-to-end process of planning and designing services. Consequently it enables you to produce more effective and accurate designs, and speeds up your response time to requests. Logical Network Inventory provides a wide range of functionality that is targeted at delivering benefit to

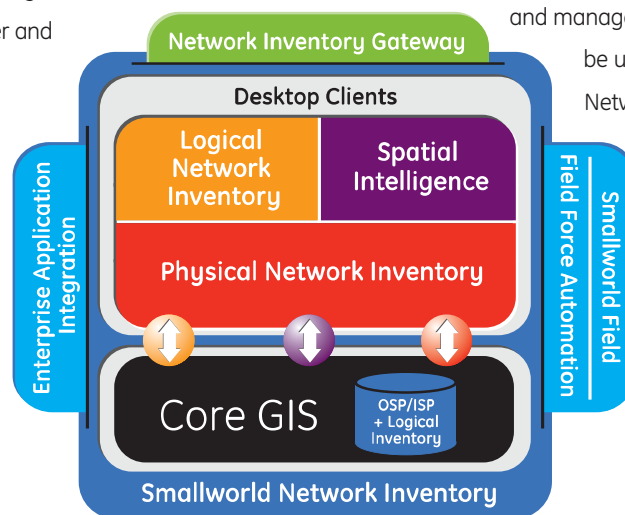
both the experienced network planner and the less experienced circuit router.

- The Microsoft® Windows®-based interface provides a high degree of support for the common workflows performed by users. This process driven approach uses an innovative graphical approach to circuit routing and wizards to automate complex tasks.

- View the physical route of circuits through the cable network by linking through to data held in Physical Network Inventory.
- Automatically generate schematic views of the logical network, helping you to visualize the circuit layout across the network.
- Faulty physical equipment can be located and interrogated to display the affected services and customers – leading to improved service assurance and reduced network outage.
- Generate reports such as circuit path reports and output auto-generated schematics.
- Use jobs to manage the changes made to fulfill a particular order and generate reports detailing these changes.

OSS Integration

Logical Network Inventory can be seamlessly integrated into the rest of your OSS to ensure that the strategically critical data held and managed within Logical Network Inventory can be utilized across the OSS. Commonly Logical Network Inventory is integrated with order handling, network management and service provisioning systems to enable automated support in the service assurance and service fulfillment processes.



* Trademark of General Electric Company.

Microsoft and Windows are either registered trademarks or trademarks of Microsoft Corporation in the United States and/or other countries.
©2005, General Electric Company. All rights reserved. The contents of this document are the property of General Electric Company. No part of this work may be reproduced or transmitted in any form or by any means, except as permitted in written license agreement with General Electric Company. General Electric Company has made every reasonable attempt to ensure the completeness and accuracy of this document. However, the information contained in this document is subject to change without notice, and does not represent a commitment on the part of General Electric Company. The GE logo is a registered trademark of General Electric Company.